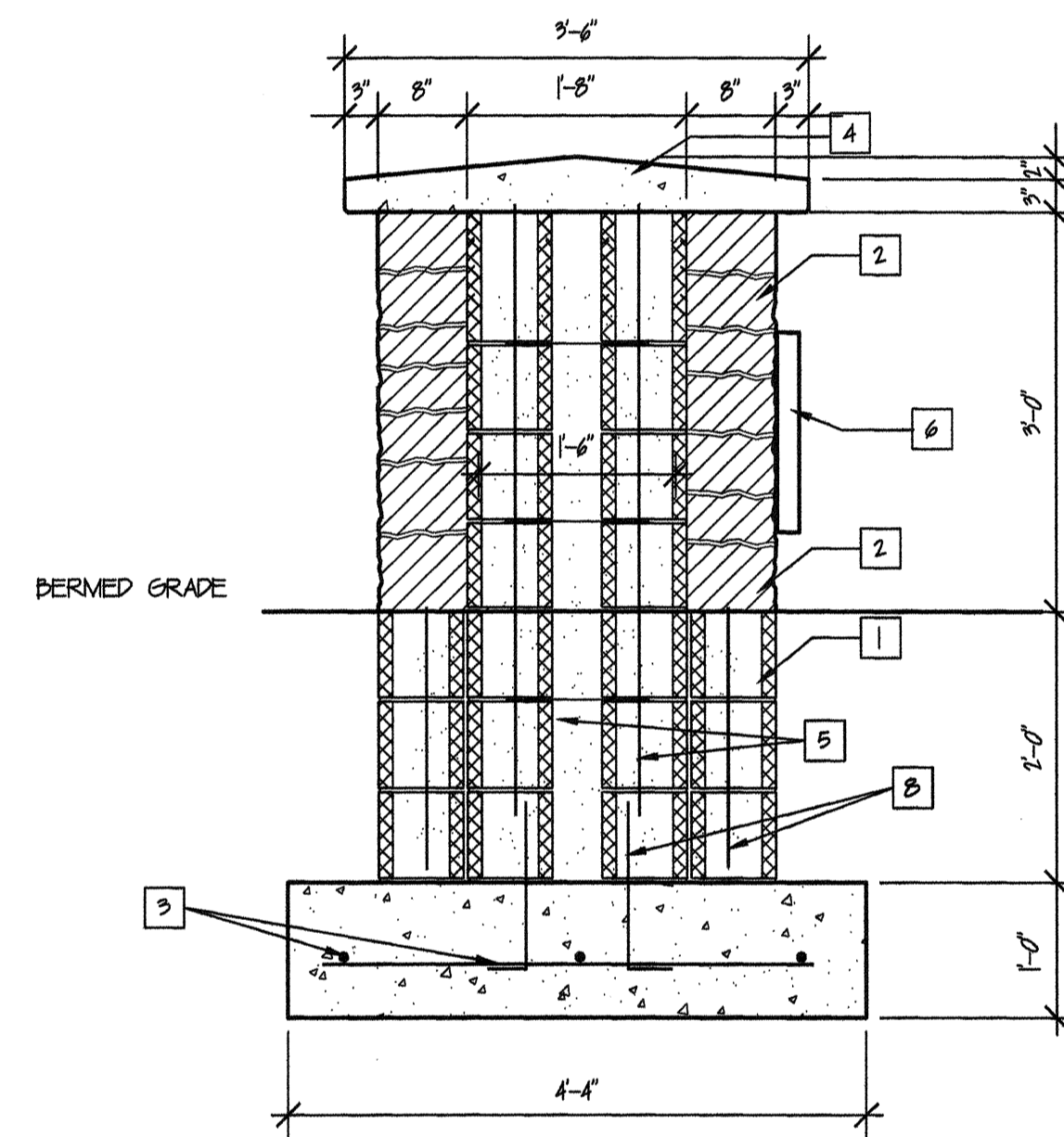
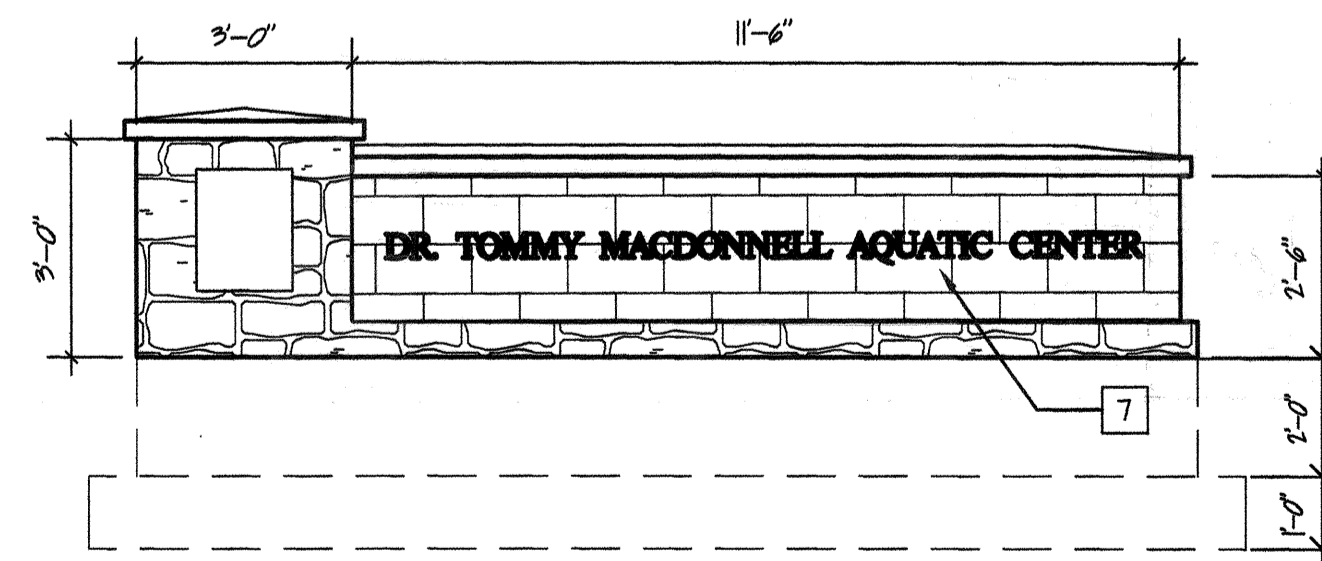


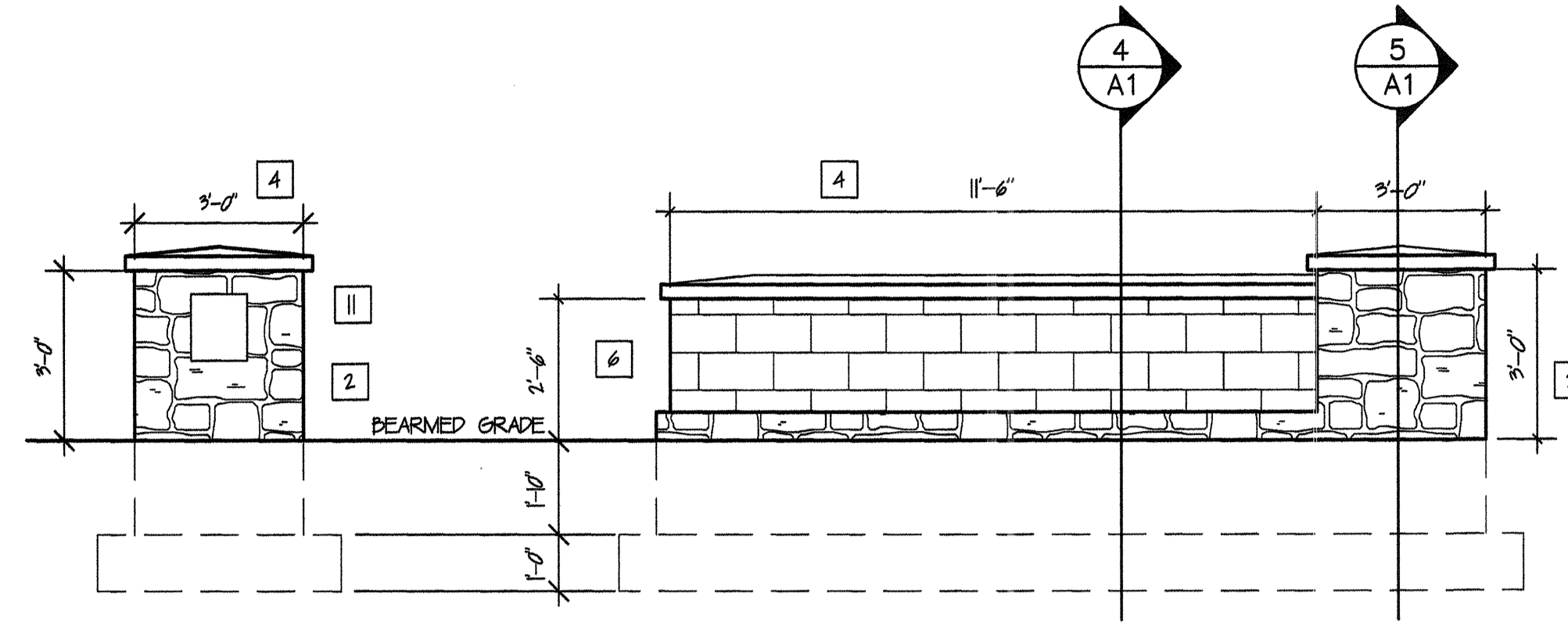
4 SIGN CROSS-SECTION
3/4" = 1'-0"



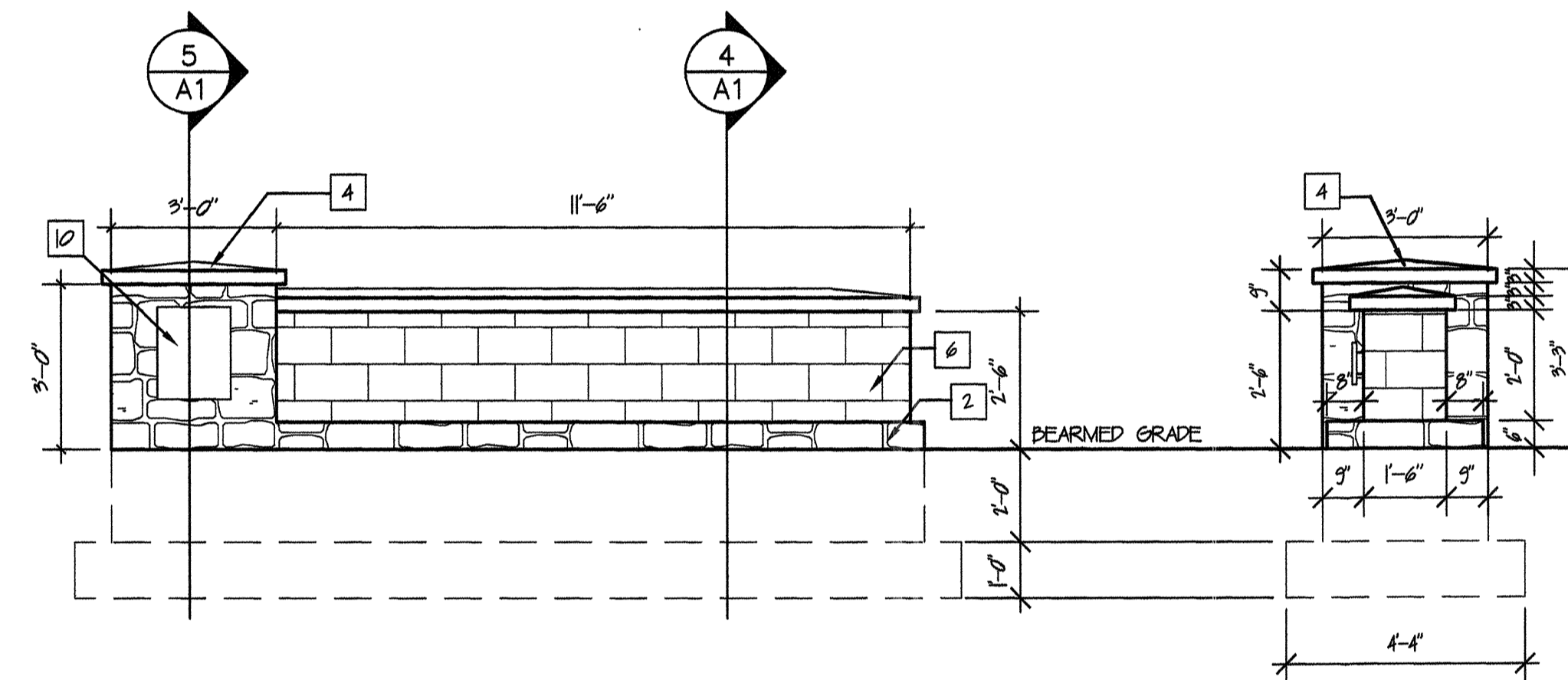
5 COLUMN CROSS-SECTION
3/4" = 1'-0"



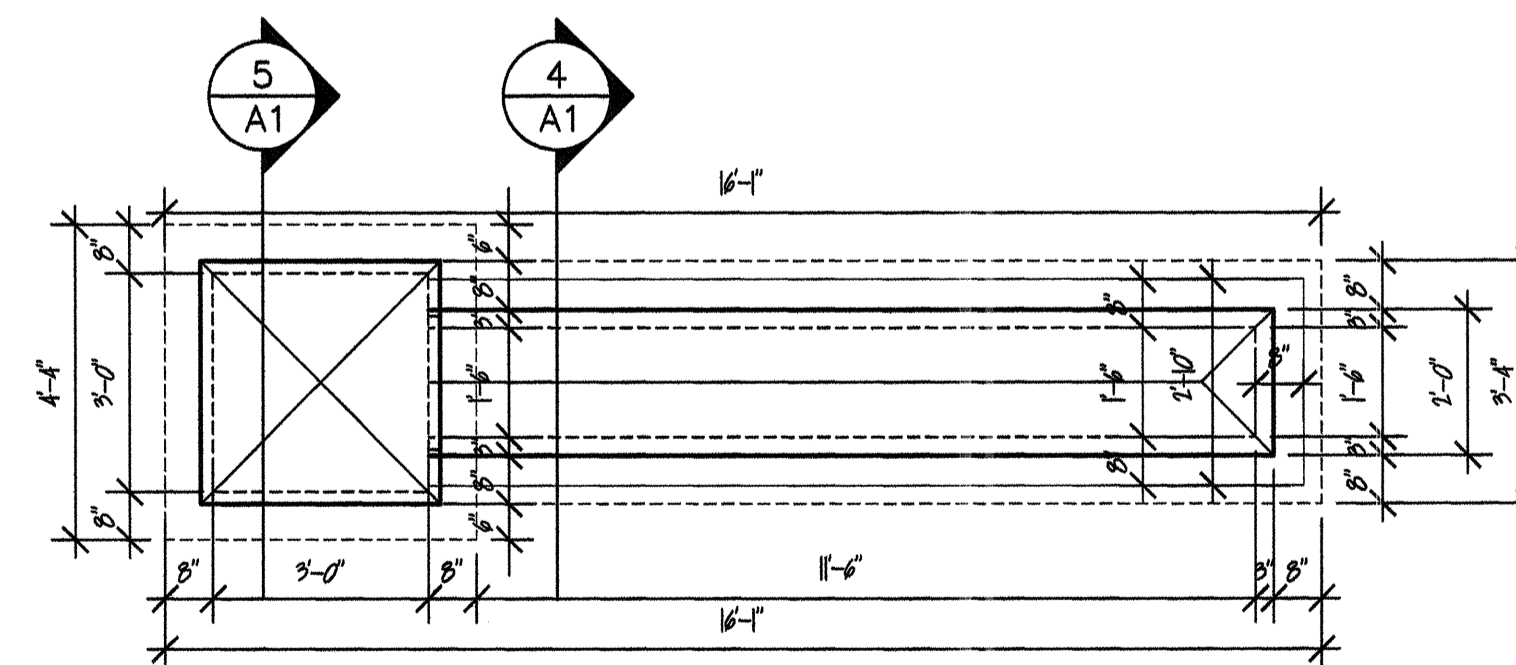
6 SIGNAGE TEXT
3/8" = 1'-0"



2 BACK AND SIDE ELEVATIONS
3/8" = 1'-0"



2 FRONT AND SIDE ELEVATIONS
3/8" = 1'-0"



1 SIGNAGE PLAN VIEW
3/8" = 1'-0"

KEYNOTES

- 1 2" CONCRETE BLOCK WITH #4 BARS VERTICAL @ 2'-0" OC.
- 2 CUT LIMESTONE TO FIT. MATERIAL PROVIDED BY OWNER.
- 3 3" - #4 BARS CONT. WITH #4 TIES @ 2'-0" OC.
- 4 CONCRETE CAP WITH 3" OVERHANG ALL SIDES WITH DRIP EDGE.
- 5 GROUT FILL ALL BLOCK VOIDS.
- 6 2" BLOCK TO MATCH EXISTING POOL BUILDING FACE BLOCK. PROVIDE REINFORCING @ 1'-4" OC. VERTICAL.
- 7 SIGNAGE TEXT BY SIGNAGE CONTRACTOR. MATERIAL: PAINTED ALUMINUM - KYNAR 500. COLOR SELECTED BY ARCHITECT. COPY: TIMELESS GEOMETRIC. HEIGHT: 3"
- 8 #4 DOWELS @ 2'-0" OC.
- 9 LED STRIP LIGHTING CONNECTED TO POWER.
- 10 16" X 18" BRONZE RELIEF. PHOTO BY OWNER.
- 11 12" X 14" CITY OF MARSHFIELD LOGO SIGNAGE.

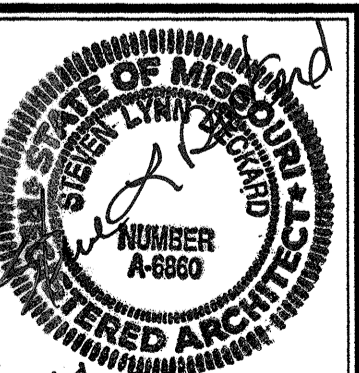
NEW POOL SIGN
PATRIOT PARK
CITY OF MARSHFIELD

1490 NORTH ELM STREET
MARSHFIELD, MO 65706

CITY OF
MARSHFIELD

Steve Deckard
Planning Administrator & Project Manager
(417) 859-2352 • sdeckard@marshfieldmo.gov

PROJECT: 1908	REVISIONS:	DATE: 6-14-22
DATE: 6-14-22		
DRAWN: SLD		
CHECKED: SLD	FILE: 1908-A	



6-14-22
SHEET:
A1
OF 1 SHEETS
SIGN